

TLPs

Youth described goals in three broad areas, and some of the ways transitional living programs (TLPs) can help them succeed.



- GED or diploma prep
- Information about vocational, technical, or college courses
- Access to technology for online learning
- Documentation for financial aid
- Help with homework
- Reminders to stay on track
- Resources for name changes
- Training in basic software use



- Job training
- Interviewing and public speaking skills
- Internet access
- Transportation passes
- Money for work and interview attire
- Employment opportunities
- Resources for name changes
- Training in basic software use



- Goal identification and formation
- Life skills training
- Cooking, laundry, and home care
- Filling out forms and applications
- Money management
- Mental and physical health care

From *3/40 Blueprint: Creating the Blueprint to Reduce LGBTQ Youth Homelessness* | www.340blueprintproject.com

5 Essentials for Transitional Living Programs (TLPs) in Rural or Remote Areas



Homeless LGBTQ youth require a range of services to meet their educational, employment, and independence goals. In addition, those residing in rural areas, or working with small populations, may need to respond to unique needs.

Educational programs with online programming.

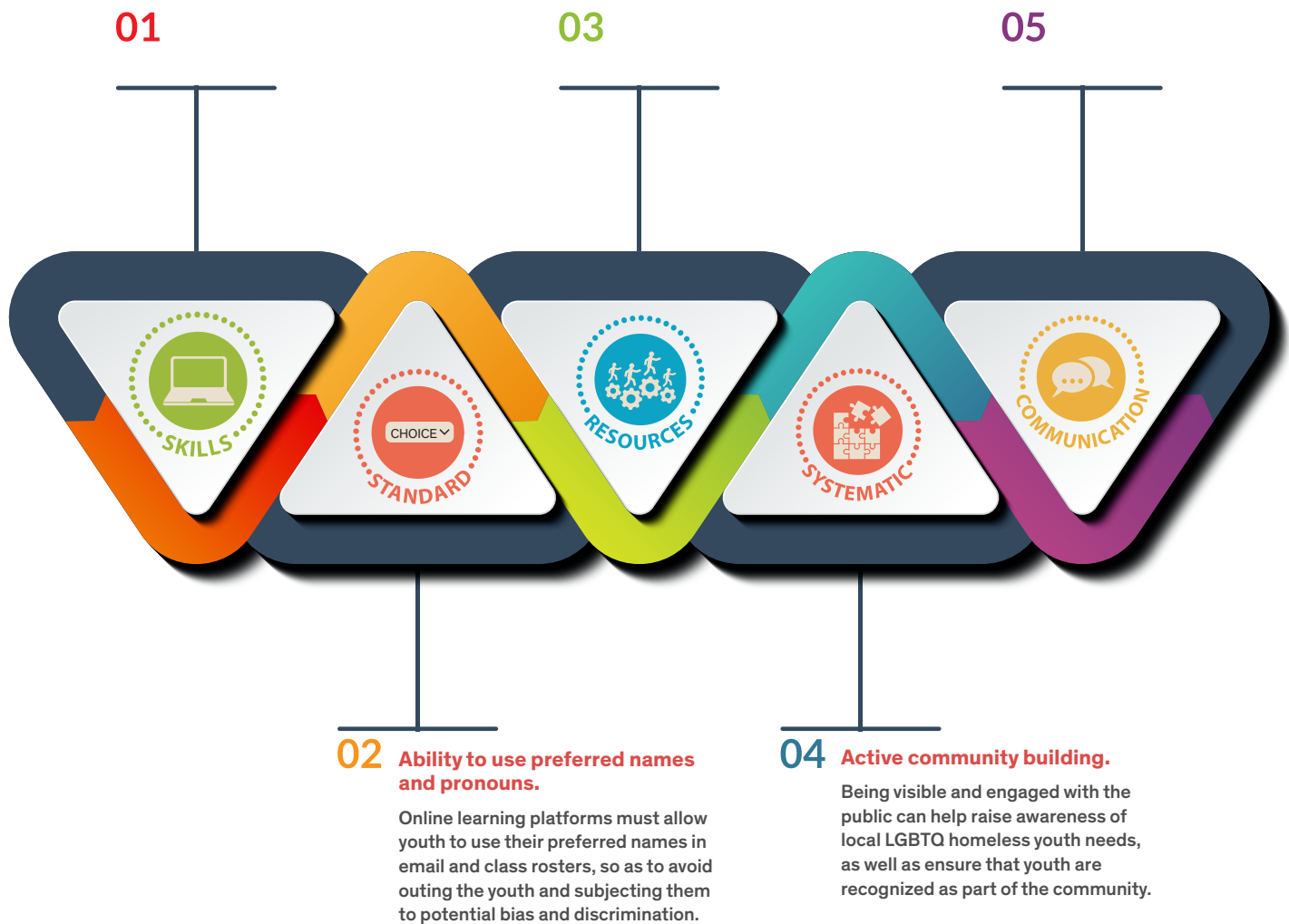
This is especially important for LGBTQ youth who may have experienced bullying, harassment, or violence in traditional educational settings, or for those situated far from a college or training center.

Access to state-wide healthcare and legal resources.

It can be difficult to identify LGBTQ-affirming medical and mental health care providers, or legal support for name changes, so TLPs may need to reach out to resources beyond their typical networks.

Open-mindedness.

While a diverse staff can help youth feel safe and affirmed, TLPs with predominately White heterosexual staff can successfully create a safe, affirming culture by being open-minded, respectful, and in touch with youth.



From 3/40 Blueprint: Creating the Blueprint to Reduce LGBTQ Youth Homelessness | www.340blueprintproject.com



Higher Hurdles for Homeless Transgender Youth: What TLPs Need to Understand and Support



Key Challenges:



From 3/40 Blueprint: Creating the Blueprint to Reduce LGBTQ Youth Homelessness | www.340blueprintproject.com



Center
for the
Study
of
Social
Policy

JANE ADDAMS
COLLEGE
OF SOCIAL WORK
UIC



UNIVERSITY of
HOUSTON
GRADUATE COLLEGE of SOCIAL WORK

Current Approaches to Homeless LGBTQ Youth Service Provision



BLUEPRINT

Specific, Integrated, and Neutral Services

In-house LGBTQ-specific services

PREFERRED

A safe space where LGBTQ youth can build connections with peers. Promoting equity by actively addressing LGBTQ-specific issues around housing, education, and employment.

CHALLENGE

Not all providers have the resources to serve populations separately.

Outsourced LGBTQ-specific services

PREFERRED

Allows providers without in-house capacity to serve the unique needs of LGBTQ youth. Supports providers whose mission is to serve all homeless youth.

CHALLENGE

May vary in quality due to different provider capacity.

Integrated LGBTQ content for all youth

PREFERRED

Supports LGBTQ youth while educating heterosexual and cisgender youth. Can potentially bring all youth closer together.

CHALLENGE

Requires being supplemented with LGBTQ-specific services to address these youths' unique needs.

Identity-neutral services

PREFERRED

May promote equality.

CHALLENGE

Often fail to recognize the impact that different aspects of the youth's identity may have on their experiences of homelessness. Do not address the prejudice and discrimination faced by LGBTQ youth, or the trauma endured by youth based on their sexual orientation, gender identity, or gender expression.

Individualized and standardized service delivery

Individualized service delivery

STRENGTH

Recognizes that all youth are different and have unique needs. Sees youth as experts of their own situations and experiences.

WEAKNESS

May be difficult due to poorly funded resources

Standardized service delivery

STRENGTH

Streamlines services for youth in your programs and simplifies service delivery for staff.

WEAKNESS

Fails to recognize the diversity of homeless youths' experiences and needs. Does not address LGBTQ-specific issues relating to housing, education, and employment.

From 3/40 Blueprint: Creating the Blueprint to Reduce LGBTQ Youth Homelessness | www.340blueprintproject.com

